

ELECTRICAL LEGEND	
	20W CEILING MOUNT LED LIGHT
	20W HANGING LED LIGHT
	SMOKE DETECTOR
	40W LED TUBE LIGHT 4'x4'
	40W LED LIGHT 4'x4'
	ONE WAY SWITCH 220V
	MULTI SOCKET OUTLET 220V
	10W WALL MOUNTED LED LIGHT
	60W CEILING FAN 220V
	SUB DISTRIBUTION BOARD
	MAIN DISTRIBUTION BOARD
	40W BATHROOM EXHAUST FAN
	CALLING BELL



ENGINEER'S TEAM

430 E 8TH ST STE 8017
HOLLAND MI 49423

SUPPORT@ENGRTEAM.COM ENGRTEAM.COM

OWNER:

8090 County Road 293 Hico
Texas, 76457

SEAL:

Release for construction

ELECTRICAL LAYOUT PLAN

Drawn by: Engr. Al Amin

Checked:

Date: NOV, 24.

E. 1

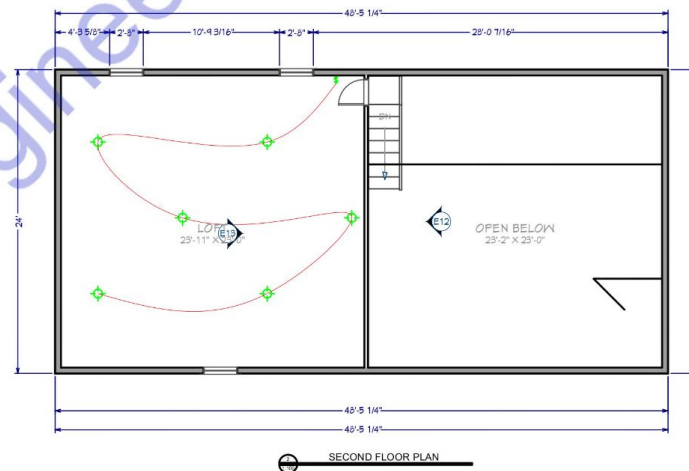
Scale: 1:100

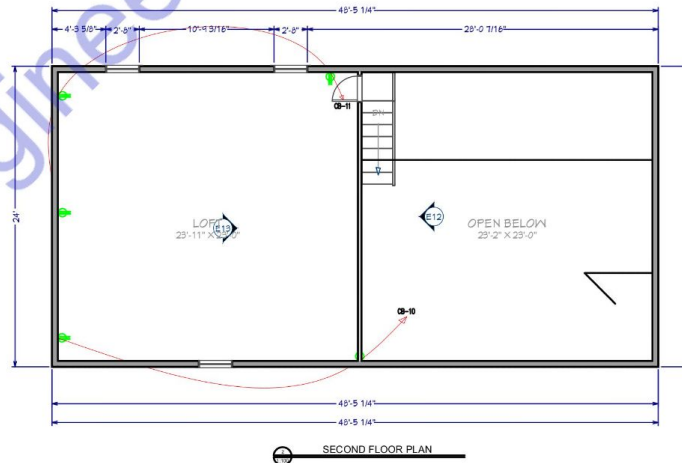
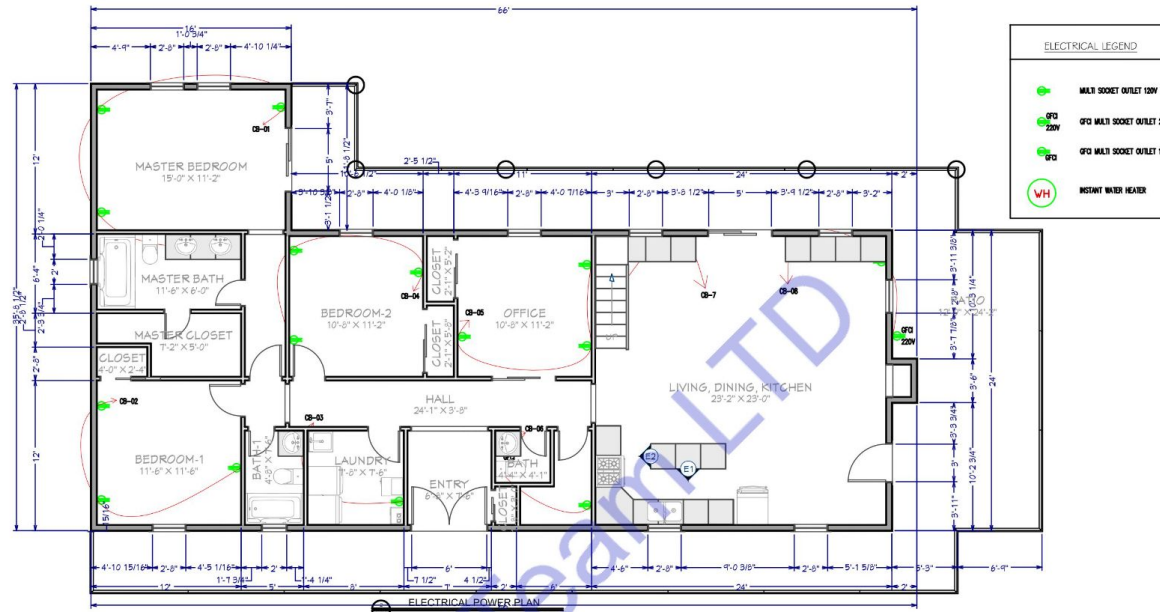
Note:

This Electrical Plan for the property located at 8090 County Road 293, Hico, Texas, 76457, adheres to the most current Texas state and local codes, ensuring both safety and compliance. The following standards were applied:

1. National Electrical Code (NEC) 2023: This electrical plan complies with NEC 2023, as adopted by the State of Texas, which governs electrical system safety standards and installations for residential and commercial buildings.
2. Texas Administrative Code - Title 16, Chapter 73: All licensing and installation requirements meet the Texas Department of Licensing and Regulations (TDLR) standards for electricians and electrical systems in accordance with the Texas Electrical Safety and Licensing Act.
3. Local Hico Amendments and Regulations: Additional local ordinances and any specific amendments or requirements for Erath County, where applicable, have been incorporated into the design to ensure full compliance with the regional standards.

These codes ensure that the design and implementation of electrical systems maintain the highest safety and operational standards, meeting Texas's regulatory and safety requirements.





Note:

This Electrical Plan for the property located at 8090 County Road 293, Hico, Texas, 76457, adheres to the most current Texas state and local codes, ensuring both safety and compliance. The following standards were applied:

- National Electrical Code (NEC) 2023: This electrical plan complies with NEC 2023, as adopted by the State of Texas, which governs electrical system safety standards and installations for residential and commercial buildings.
- Texas Administrative Code - Title 16, Chapter 73: All licensing and installation requirements meet the Texas Department of Licensing and Regulation's (TDLR) standards for electricians and electrical systems in accordance with the Texas Electrical Safety and Licensing Act.
- Local Hico Amendments and Regulations: Additional local ordinances and any specific amendments or requirements for Erath County, where applicable, have been incorporated into the design to ensure full compliance with the regional standards.

These codes ensure that the design and implementation of electrical systems maintain the highest safety and operational standards, meeting Texas's regulatory and safety requirements.

ENGINEER'S TEAM

430 E 8TH ST STE 8017
HOLLAND MI 49423

SUPPORT@ENGRTEAM.COM ENGRTEAM.COM

OWNER:

8090 County Road 293 Hico
Texas, 76457

SEAL:

Release for construction

ELECTRICAL LAYOUT PLAN

Drawn by: Engr. Al Amin

Checked:

Date: NOV, 24.

E. 1

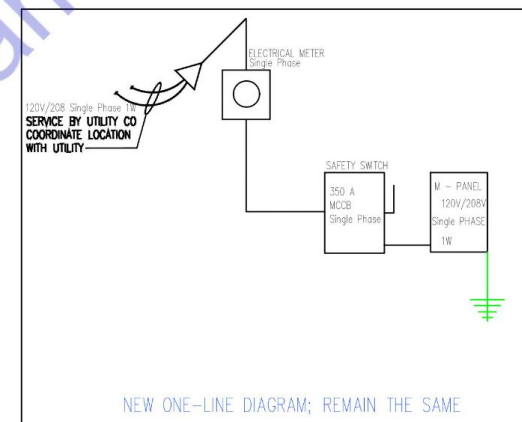
Scale: 1:100

120/240 VOLT SINGLE PHASE 2 WIRE ELECTRICAL SERVICE				
ITEM	CONN. LOAD (VA)	DEMAND F.	DEMAND LOAD (WATTS)	TOTAL (AMPS)
LIGHTING	1380	125%	1725	
WATER HEATERS	2000	100%	2000	
EQUIPMENT	5000	65%	3250	
HVAC LOADS	19343	100%	19343	
SUB-TOTAL			26318	
LARGEST MOTOR	0	125%	0	
TOTAL @ 120/208 V	27723		26318	220

PANEL SCHEDULE & SERVICE CALCULATION

ELECTRICAL PANEL-MAIN											
LOAD SERVED	CKT #	TYPE	BKR TRIP	WIRE SIZE	PHASE A	PHASE A	BKR TRIP	WIRE SIZE	TYPE	CKT #	LOAD SERVED
HVAC-5.5 TONS	1		170	#5/D	19343	1380	15	#14	2		LIGHTING LOAD
CB-5	3		20	#12	500	2000	20	#12	4		WATER HEATER
CB-6	5		20	#12	1000	500	20	#12	6		CB-1
CB-7	7		20	#12	500	500	20	#12	8		CB-2
CB-8	9		20	#12	500	4000	40	#8	10		CB-3
CB-9	11		20	#12	500	500	20	#12	12		CB-4
CB-11	13		20	#12	500	500	20	#12	14		CB-10
TOTAL VA PHASE A						9160		32003			
TOTAL VOLT-AMPS								32000			
DIVIDE TOTAL VOLT-AMPS BY SYSTEM VOLTAGE (PHASE)						120		AMPS		267	
TOTAL CONNECTED LOAD (AMPS) @ 125%						334					
MAIN TYPE AND AMPERE RATING						350 AMP MCCB					
PANEL FEEDER SIZE - SEE RISER DIAGRAM											

Material	
Name	Watt
CEILING MOUNT ROUND LED LIGHT	20W
WALL MOUNT LED LIGHT	10W
CEILING MOUNT 2"X2" SQUARE LED LIGHT	40W
HANGING LIGHT	20W



SINGLE LINE DIAGRAM



ENGINEER'S TEAM

430 E 8TH ST STE 8017
HOLLAND MI 49423

ENGRTEAM.COM

SUPPORT@ENGRTEAM.COM

OWNER:

8090 County Road 293 Hico
Texas, 76457

SEAL:

Release for construction

ELECTRICAL LOAD SCHEDULE PLAN

Drawn by: Engr. Al Amin
Checked:
Date: NOV. 24.

E. 2

Scale: 1:100