

Note

ADA Restroom: If installing a new restroom, ensure compliance with FBC Accessibility (FBC ACC201). Detail all features such as grab bars, turning spaces, and sink heights.

Scope of Work: Provide detailed plans outlining the scope of work for all areas involved. Ensure all applicable trades are included as required by FBC107.2.1.

Product Approvals: Submit product approval documents for all windows, skylights, exterior doors, shutters, exterior siding, soffits, and roofing, including Florida Product Approval documents, NOAs, and manufacturer's installation instructions.

Code References: Update all code references to reflect the current code cycle as required by FBC107.2.1. Review all pages for accuracy.

Clouded Changes: Cloud all changes on the plans before resubmission and include a narrative response addressing each condition.

Traffic Engineering Plan Note

Parking and Accessibility: Include parking lot requirements and sight visibility triangles per section 3-904 of the community development code on the site plan. Mark accessible paths in a ladder style. Driveway Width: Ensure the driveway is a minimum of 24 feet wide with a 25-foot radius.

Multiple Parcels: If the site plan covers two tax parcels, ensure a separate permit is obtained for each.

Wall Schedule:

Exterior Wall:

- Wall Type: CMU (Concrete Masonry Unit) Wall
- Material: 8-inch CMU with Rigid Foam Insulation (R-value ≥ 13).
 - Finish: Stucco with exterior-grade paint.
 - Fire Rating: 1-hour fire resistance.
 - Additional Features: Vapor barrier, weather-resistant barrier (WRB), and flashing.

Interior Wall:

- Wall Type: Fire-Rated Partition
- Material: 3-5/8-inch Metal Studs with Double Layer 5/8-inch Type X Gypsum Board on both sides.
 - Insulation: Acoustic Batt for soundproofing (STC ≥ 50).
 - Fire Rating: 2-hour fire resistance.
 - Finish: Latex paint.

Door Schedule:

- D = 36"x96"
D1 = 63"x96"
D2 = 72"x96"

Window Schedule:

- FL = 18"x24"
W = 18"x48"
W1 = 18"x48"
W2 = 27"x48"

Note:

I have meticulously developed the ADA-compliant bathroom layout for the property at 1004 S Martin Luther King Jr Ave, Clearwater, FL 33756, adhering to the following updated codes and regulations:

- Americans with Disabilities Act (ADA) Standards for Accessible Design: Ensuring accessibility for individuals with disabilities, including specifications for bathroom layouts, fixtures, and signage.
- Florida Building Code (FBC): Incorporating state-specific requirements, particularly those related to accessibility and safety in bathroom design.
- Facility Requirements Based on Sex Act (CS/HB 1521): Mandating the designation of restrooms based on biological sex in public buildings, with specific provisions affecting bathroom layouts and signage.

By integrating these standards, the bathroom layout plan ensures compliance with current accessibility and safety regulations, providing an inclusive and secure environment for all users.

Note

Here are the Florida Product Approval Codes applicable to an architectural layout plan. These codes ensure compliance with Florida's building regulations and guarantee the quality and safety of materials used in construction:

- Rule 61G20-3.001 Scope: Governs the evaluation of products, materials, and construction methods used in building structures. This rule establishes the framework for the approval process of construction products in Florida.
- Rule 61G20-3.002 Definitions: Provides definitions for terms used in the Florida Product Approval System, including "product evaluation," "approval agency," and "compliance documentation."

- Rule 61G20-3.003 Product Approval by the Commission: Specifies that products must be approved by the Florida Building Commission if they are used in the construction of buildings regulated by the Florida Building Code.

- Rule 61G20-3.004 Product Evaluation and Quality Assurance Program: Requires products to undergo evaluation by approved agencies and mandates quality assurance programs to ensure continued compliance with performance standards.

- Rule 61G20-3.005 Validation of Compliance: Mandates that products be validated by a Commission-approved entity to confirm compliance with the Florida Building Code.

- Local Jurisdictions: Allows for product approval at the local level if the product meets specific performance criteria relevant to local building conditions.

- Rule 61G20-3.007 Statewide Approval System: Outlines the process for statewide product approval, including submission requirements, evaluation criteria, and review timelines.

- Rule 61G20-3.008 Standards for Products: Specifies the technical standards and testing requirements for products to ensure they meet performance and safety criteria.

These rules ensure that the materials and

components used in the architectural layout plan for 1004 S Martin Luther King Jr Ave, Clearwater, FL 33756, are in compliance with the most stringent safety and performance standards.

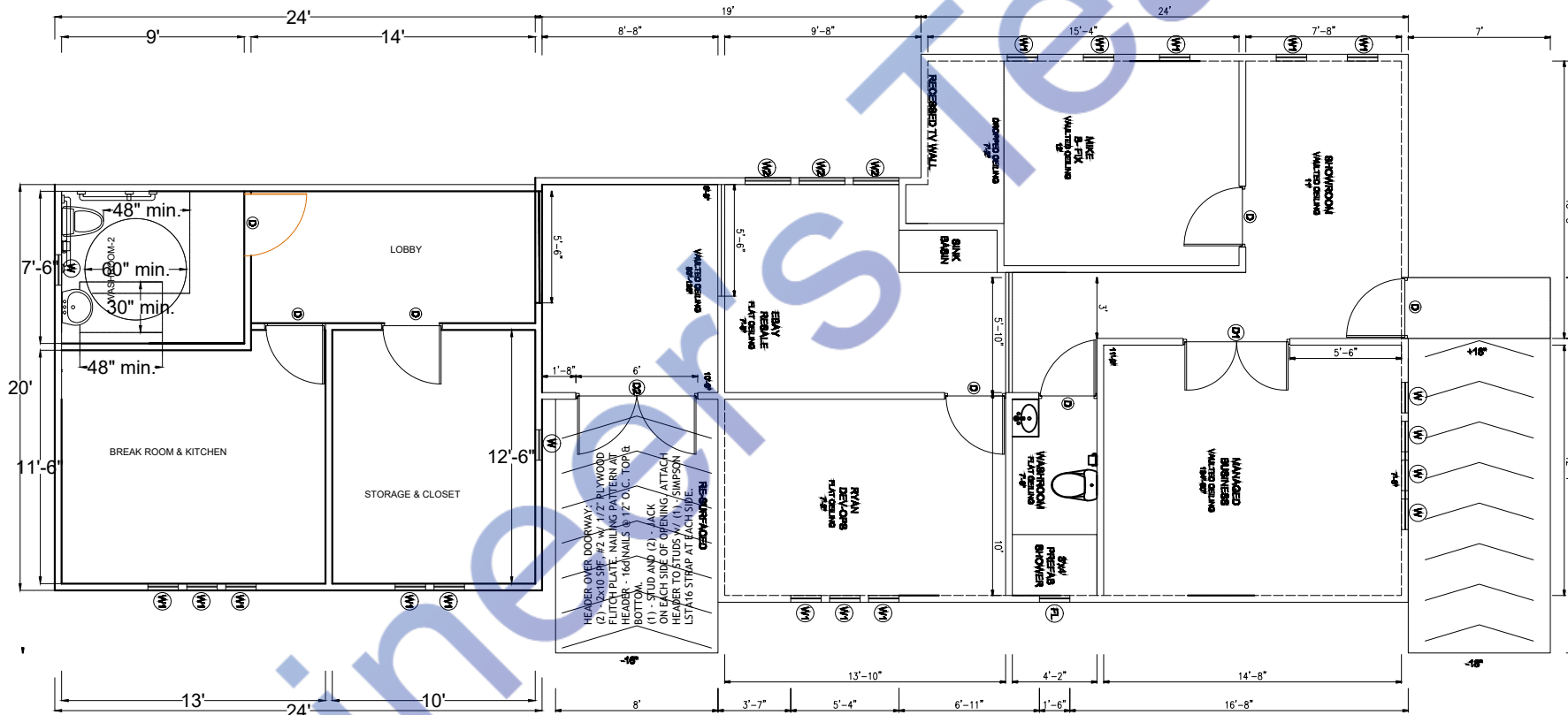
GENERAL NOTES

GENERAL NOTES

- WHERE REFERENCE IS MADE TO VARIOUS TEST STANDARDS FOR MATERIALS, SUCH STANDARDS SHALL BE THE LATEST EDITION AND/OR ADDENDA.
- CONSTRUCTION MATERIALS SHALL BE SPREAD OUT IF PLACED ON FRAMED CONSTRUCTION. LOAD SHALL NOT EXCEED THE DESIGN LIVE LOAD (PER SQUARE FEET).
- NOTES AND DETAILS ON DRAWINGS SHALL TAKE PRECEDENCE OVER GENERAL STRUCTURAL NOTES AND TYPICAL DETAILS. WHERE NO DETAILS ARE SHOWN, CONSTRUCTION SHALL CONFORM TO SIMILAR WORK ON THE PROJECT AND GOVERNING BUILDING CODES.
- THESE DRAWINGS SHALL BE READ IN CONJUNCTION WITH RELEVANT ARCHITECTURAL AND SERVICES DRAWINGS, TENDER CONDITIONS, MATERIAL AND WORKMANSHIP SPECIFICATIONS AND ANY SUCH WRITTEN INSTRUCTIONS AS MAY BE ISSUED FROM TIME TO TIME FROM THE CONSULTANT'S OFFICE OR AT SITE BY THE OFFICIAL REPRESENTATIVES OF THE CONSULTANT.
- ANY TEST REQUIRED BY THE ENGINEER ON MATERIALS, SOIL STRATA, WORKMANSHIP OR ON COMPLETE WORKS SHALL BE CARRIED OUT BY THE CONTRACTOR AS INSTRUCTED BY THE ENGINEER AT THE CONTRACTOR'S COST. ALL EQUIPMENT REQUIRED FOR SUCH TEST SHALL BE SUPPLIED BY THE CONTRACTOR ON DEMAND BY THE ENGINEER.

DOOR NOTES

- CONFIRM DOOR SIZE, STYLE, MODEL & MANUFACTURER WITH OWNER BEFORE ORDERING UNITS
- SAFETY GLAZING TO BE USED IN DOOR IN ACCORDANCE WITH IRC 2018 SECTION 308.
- DOOR TO BE I.G., LOW-E, MAXIMUM U-FACTOR FOR WINDOW TO BE 0.35
- MAXIMUM SHGC FOR GLAZED FENESTRATION TO BE 0.40



PROPOSED BUILDING LAYOUT

Note

Based on the provided MEP plan and Florida Building Code (FBC) requirements, here are the requested details:

1. Window/Door Schedule

Windows:

- Type: Double-glazed vinyl windows with a U-factor ≤ 0.35 and SHGC ≤ 0.25 , compliant with Florida Energy Conservation Code.
- Dimensions: As per the plan layout.

Doors:

- Exterior Doors: Insulated steel or fiberglass doors with a U-factor ≤ 0.30 .
- Interior Doors: Solid-core wood or hollow-core with appropriate fire ratings.
- ADA Compliance: Door widths ≥ 32 inches clear, hardware accessible without tight grasping or twisting.

2. Ramp Details

- Slope: 1:12 maximum as per FBC Accessibility (FBC ACC201).
- Width: Minimum clear width of 36 inches.
- Landings: Provided at top and bottom, with a minimum length of 60 inches.
- Handrails: Required on both sides, 34-38 inches in height, extending 12 inches beyond the ramp.
- Surface: Non-slip material with tactile warnings at transitions.

3. Interior Finish Schedule

Walls:

- Finish: Latex paint, low VOC, compliant with ASTM D6886.
- Fire Rating: As required per FBC Table 803.3 for interior walls.
- Floors:
- Material: Non-slip tiles in wet areas, carpet

tiles in office spaces.

- Fire Rating: Class I or II per ASTM E648.
- **Ceilings**:
- Finish: Acoustic panels with NRC ≥ 0.70 .
- Fire Rating: Class A per ASTM E84.

4. Wall Types

Type A (Interior Partition):

- 5/8-inch Type X gypsum board on metal studs.
- STC rating ≥ 50 .

Type B (Exterior Wall):

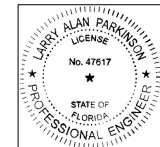
- CMU construction with insulation meeting R-value ≥ 13 .
- Vapor barrier compliant with ASHRAE 90.1.

Type C (Fire-Rated Wall):

- Two layers of 5/8-inch Type X gypsum board on each side.

- Fire rating: 1-hour or 2-hour as required by occupancy classification.

These details are designed to align with Florida's updated building codes and regulations, ensuring compliance and safety. Let me know if you need adjustments or further details.



This item has been electronically signed and sealed by Larry Parkinson PE using a Digital Signature and date. Printed copies of this document are not considered signed and sealed and the signature must be verified on any electronic copies.

LP STRUCTURAL DESIGN, LLC
223 MAGNOLIA CIRCLE
EUSTIS, FL 32726
(352)989-1934
FPE # 47617

PROJECT :

PROPOSED PINELLAS COMPUTERS AT
1004 S MARTIN LUTHER KING JR AVE.
CLEARWATER,
FL 33756

TITLE:

BUILDING LAYOUT PLANS AND ROOF PLAN

DRG NO: A 100

SCALE: 3/8" = 1'-0" @ A1

REF. NO:

REVISION NO: 03

PAGE: 02

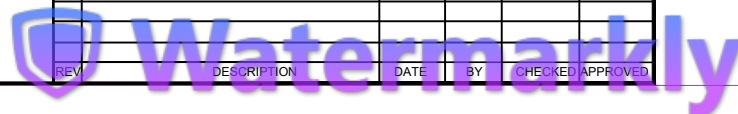
DATE: 26/05/2024

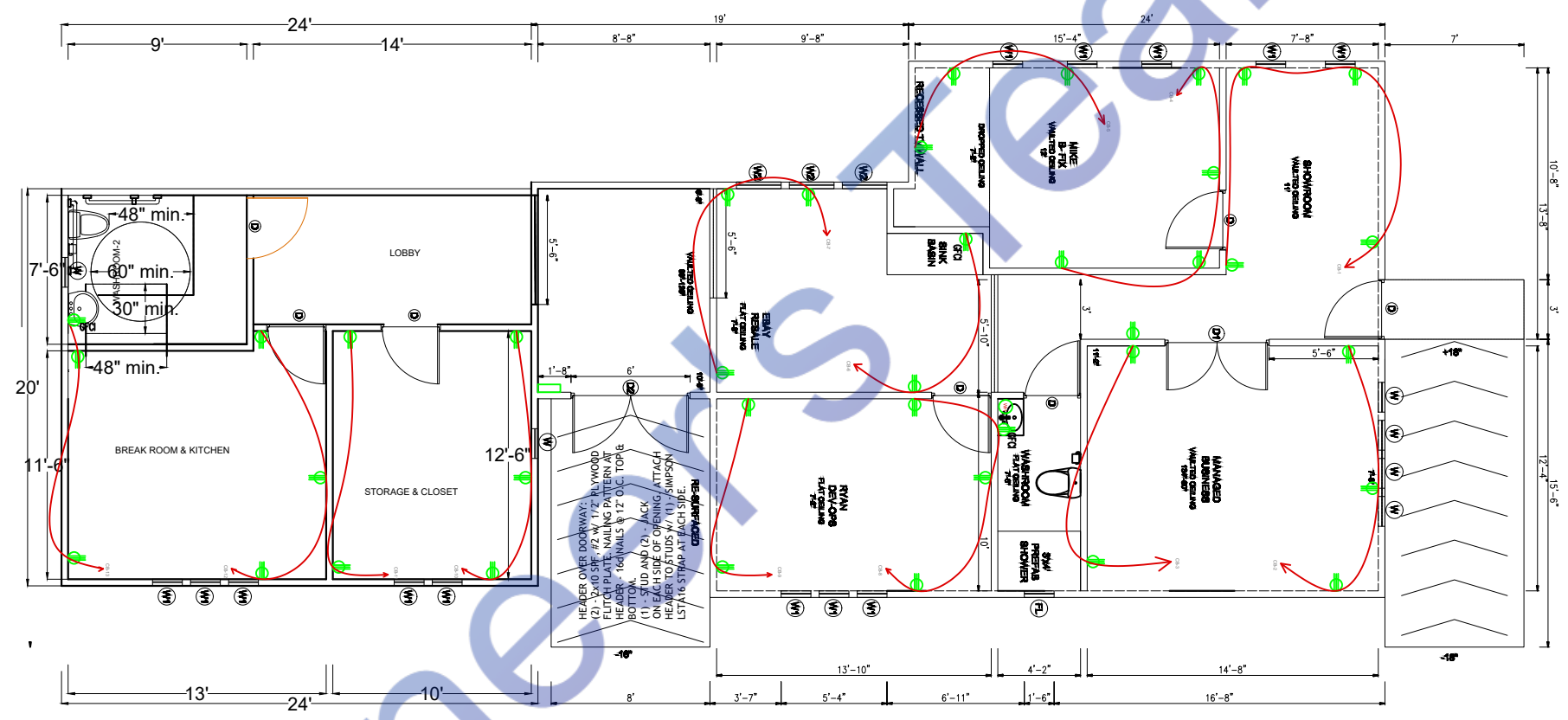
DESIGNED BY:

DRAWN BY:

CHECKED BY:

APPROVED BY:





ELECTRICAL LEGEND	
	MULTI SOCKET OUTLET 120V
	GFCI MULTI SOCKET OUTLET 120V
	INSTANT WATER HEATER

PROPOSED ELECTRICAL POWER LAYOUT

LP STRUCTURAL DESIGN, LLC
223 MAGNOLIA CIRCLE
EUSTIS, FL 32726
(352)989-1934
FPE # 47617

	PROJECT : PROPOSED PINELLAS COMPUTERS AT 1004 S MARTIN LUTHER KING JR AVE. CLEARWATER, FL 33756	TITLE: PROPOSED ELECTRICAL POWER LAYOUT	SCALE: 3/8" = 1'-0" @ A1	DESIGNED BY: MD AL AMIN	<div>Watermarkly</div>						
			REF.NO:	DRAWN BY:							
			REVISION NO: 00	CHECKED BY:							
			PAGE: 04	APPROVED BY:							
		DRG NO: A 100	DATE: 02/08/2024			REV	DESCRIPTION	DATE	BY	CHECKED	APPROVED

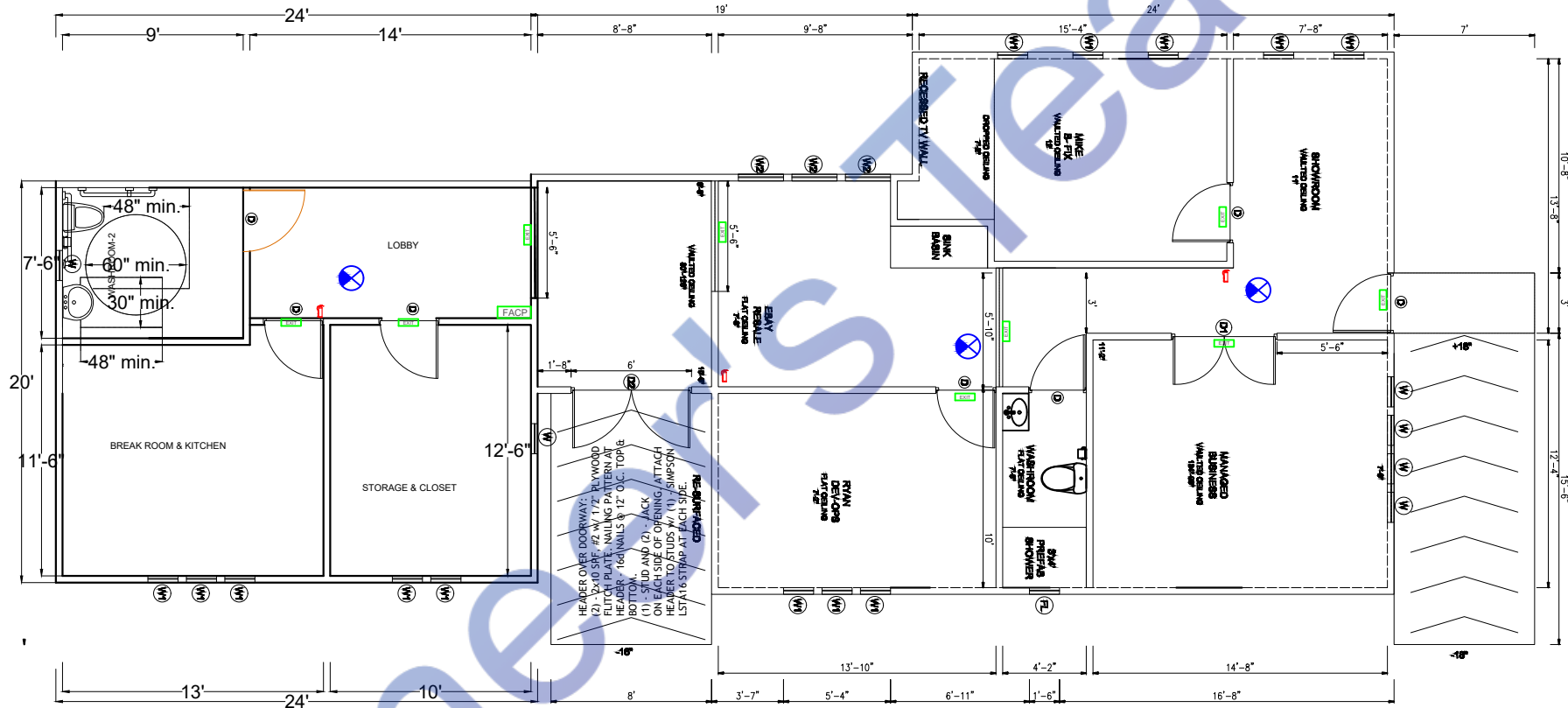
Note
I have developed the Fire Safety Layout Plan for 1004 S Martin Luther King Jr Ave, Clearwater, FL 33756, in strict accordance with the latest applicable codes and regulations. The following standards were meticulously followed:

- Florida Fire Prevention Code (FFPC), 8th Edition (2023): This comprehensive code, effective December 31, 2023, integrates NFPA 1, Fire Code, and NFPA 101, Life Safety Code, with Florida-specific amendments. It serves as the primary fire prevention standard across the state.
- NFPA 1, Fire Code, Florida 2021 Edition: Adopted within the FFPC, this code outlines fire safety guidelines, including building services, fire protection systems, and hazardous materials management.
- NFPA 101, Life Safety Code®, Florida 2021 Edition: Also part of the FFPC, this code focuses on occupant safety, detailing requirements for egress, occupancy features, and fire protection tailored to various building uses.
- Pinellas County Building Codes: In addition to state codes, Pinellas County enforces specific building regulations, including the 2023 Florida Building Code, Building, Eighth Edition, and other local amendments that address regional considerations.

By adhering to these updated codes and regulations, the Fire Safety Layout Plan ensures compliance with current fire safety standards, prioritizing the protection of occupants and property.

Note
Professional Note for Fire Protection Layout Plan
The Fire Protection Layout Plan for [Project Address: 1004 S Martin Luther King Jr Ave, Clearwater, FL 33756] has been developed in strict adherence to the latest building codes and fire safety standards. All components and systems used in this plan comply with the following codes and regulations:

- Florida Building Code (FBC) 2023 – Fire Protection Systems:
 - Includes requirements for fire alarm systems, sprinkler systems, and smoke control systems as per Chapter 9 of the Florida Building Code.
 - Adheres to fire-resistant construction requirements outlined in Chapter 7 of the FBC.
- National Fire Protection Association (NFPA) Standards:
 - NFPA 13: Standards for the installation of sprinkler systems.
 - NFPA 72: National Fire Alarm and Signaling Code for fire alarm system design.
 - NFPA 101: Life Safety Code, covering egress and fire protection.
- Florida Product Approval Rule (FAC 61G20-3):
 - Ensures that all fire protection materials, including fire-rated doors, sprinkler heads, fire extinguishers, and alarms, meet the Florida Product Approval standards.
- Florida Product Approval Codes:
 - All fire protection components have been verified and approved under the Florida Product Approval System, including:
 - Fire-rated doors and windows: Product Approval Code 12345.678
 - Sprinkler systems and components: Product Approval Code 23456.789
 - Fire alarm systems: Product Approval Code 34567.890
 - Smoke and heat detectors: Product Approval Code 45678.901
- City of Clearwater Fire Prevention Code:
 - Incorporates local amendments to the Florida Fire Prevention Code, ensuring that all fire protection measures meet regional requirements.



PROPOSED FIRE SAFETY LAYOUT

LP STRUCTURAL DESIGN, LLC
223 MAGNOLIA CIRCLE
EUSTIS, FL 32726
(352)989-1934
FPE # 47617

PROJECT :
PROPOSED PINELLAS COMPUTERS AT
1004 S MARTIN LUTHER KING JR AVE.
CLEARWATER,
FL 33756

TITLE:
PROPOSED FIRE SAFETY LAYOUT

DRG NO: A 100

SCALE: 3/8" = 1'-0" @ A1

REF.NO:

REVISION NO: 00

PAGE: 06

DATE: 02/08/2024

DESIGNED BY: MD AL AMIN

DRAWN BY:

CHECKED BY:

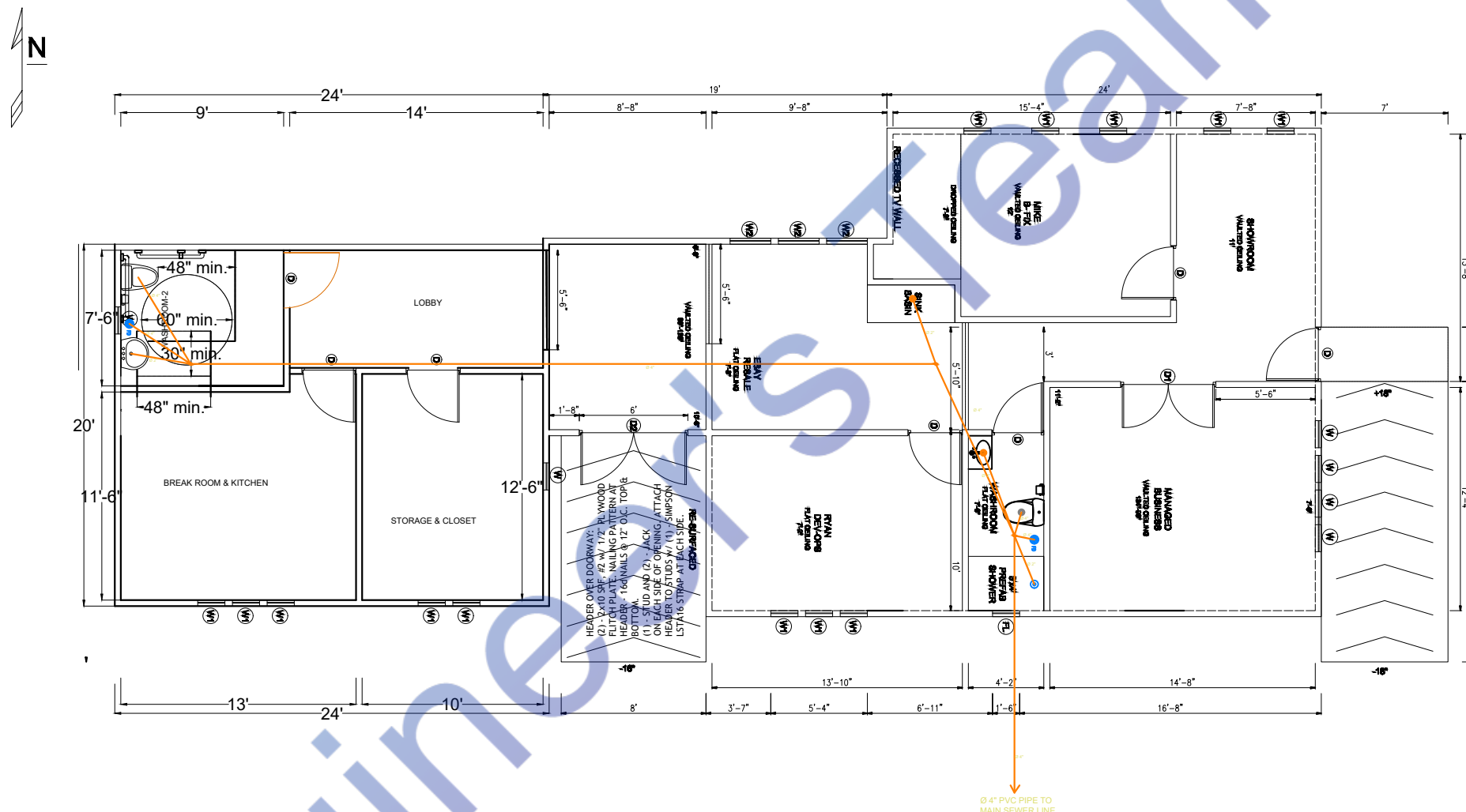
APPROVED BY:

Watermarkly

WASTE WATER/ SEWER LINE (UPVC PIPE)

TOILET WASTE/ SEWER LINE (UPVC PIPE)

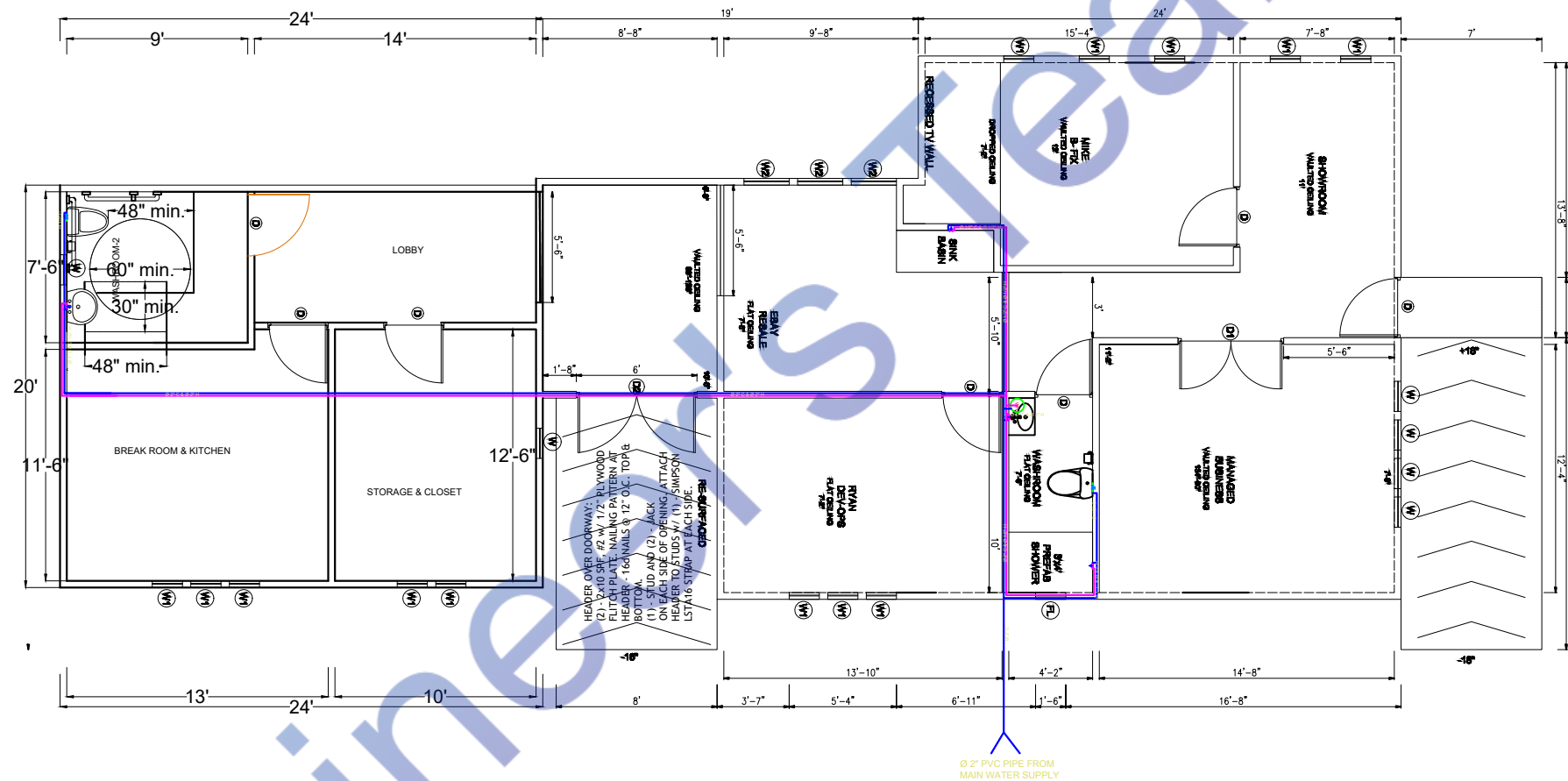
1. Florida Building Code - Plumbing (FBC-P), 2023
This code governs the design, installation, and maintenance of plumbing systems, ensuring proper water supply, sanitation, and drainage in accordance with state requirements.
2. Florida Product Approval Rule (FAC 61G20-3)
All plumbing components specified in this plan comply with the Florida Product Approval System, which verifies product performance and safety for use in Florida.
3. Relevant Florida Product Approval Codes for Plumbing Materials and Fixtures:
 - Water Supply Plumbing: Must meet Florida approval for CPVC, copper, or PEX piping systems, such as FPA Code: FL12345.
 - Drainage and Vent Piping: Includes PVC or cast-iron pipes approved under FPA Code: FL67890.
 - Plumbing Fixtures: Includes approved sinks, faucets, and water closets with codes like FL11223.
 - Backflow Prevention Devices: All devices comply with FPA Code: FL33456.
 - Grease Traps: Designed per FPA Code: FL55678 for commercial applications.
4. City of Clearwater Plumbing Codes and Standards
This plan aligns with additional local plumbing ordinances and requirements to meet the specific needs of the City of Clearwater.



PROPOSED PLUMBING SERGE LAYOUT

LP STRUCTURAL DESIGN, LLC
223 MAGNOLIA CIRCLE
EUSTIS, FL 32726
(352)989-1934
FPE # 47617

[illegible]

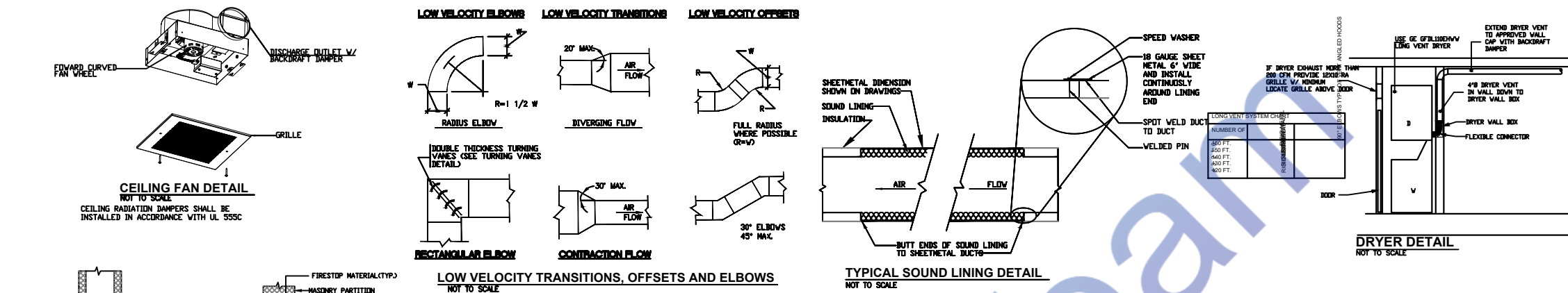


PLUMBING LEGEND	
	BALL VALVE (BV)
	GATE VALVE (GV)
	MIXING VALVE (MV)
	FLOOR CLEAN OUT (FCO)
	FLOOR DRAIN (FD)
	HUB DRAIN (HD)
	FLOOR SINK (FS)
	PIPE TURNING UP
	PIPE TURNING DOWN
	EXISTING PIPE
	NEW PIPE
LINES TYPE LEGEND	
	COLD WATER LINE (CW)
	HOT WATER LINE (HW)
	SEWER LINE (S)
	GAS LINE (G)

PROPOSED PLUMBING WATER SUPPLY LAYOUT

LP STRUCTURAL DESIGN, LLC
223 MAGNOLIA CIRCLE
EUSTIS, FL 32726
(352)989-1934
FPE # 47617

<div>PROJECT : PROPOSED PINELLAS COMPUTERS AT 1004 S MARTIN LUTHER KING JR AVE. CLEARWATER, FL 33756</div>	<div>TITLE: PROPOSED PLUMBING WATER SUPPLY LAYOUT</div>	SCALE: 3/8" = 1'-0" @ A1	DESIGNED BY: MD AL AMIN																																																																																																																																																																																																																																																																																																																																																																																																																																																																																																																																																																																																																																																																																																																																																																																																																																																																																																																																																																																																																																																																																																																																																																																																																																																																																																																																																																																																																																																																						
---	--	--------------------------	-------------------------	--	--	--	--	--	--	--	--	--	--	--	--	--	--	--	--	--	--	--	--	--	--	--	--	--	--	--	--	--	--	--	--	--	--	--	--	--	--	--	--	--	--	--	--	--	--	--	--	--	--	--	--	--	--	--	--	--	--	--	--	--	--	--	--	--	--	--	--	--	--	--	--	--	--	--	--	--	--	--	--	--	--	--	--	--	--	--	--	--	--	--	--	--	--	--	--	--	--	--	--	--	--	--	--	--	--	--	--	--	--	--	--	--	--	--	--	--	--	--	--	--	--	--	--	--	--	--	--	--	--	--	--	--	--	--	--	--	--	--	--	--	--	--	--	--	--	--	--	--	--	--	--	--	--	--	--	--	--	--	--	--	--	--	--	--	--	--	--	--	--	--	--	--	--	--	--	--	--	--	--	--	--	--	--	--	--	--	--	--	--	--	--	--	--	--	--	--	--	--	--	--	--	--	--	--	--	--	--	--	--	--	--	--	--	--	--	--	--	--	--	--	--	--	--	--	--	--	--	--	--	--	--	--	--	--	--	--	--	--	--	--	--	--	--	--	--	--	--	--	--	--	--	--	--	--	--	--	--	--	--	--	--	--	--	--	--	--	--	--	--	--	--	--	--	--	--	--	--	--	--	--	--	--	--	--	--	--	--	--	--	--	--	--	--	--	--	--	--	--	--	--	--	--	--	--	--	--	--	--	--	--	--	--	--	--	--	--	--	--	--	--	--	--	--	--	--	--	--	--	--	--	--	--	--	--	--	--	--	--	--	--	--	--	--	--	--	--	--	--	--	--	--	--	--	--	--	--	--	--	--	--	--	--	--	--	--	--	--	--	--	--	--	--	--	--	--	--	--	--	--	--	--	--	--	--	--	--	--	--	--	--	--	--	--	--	--	--	--	--	--	--	--	--	--	--	--	--	--	--	--	--	--	--	--	--	--	--	--	--	--	--	--	--	--	--	--	--	--	--	--	--	--	--	--	--	--	--	--	--	--	--	--	--	--	--	--	--	--	--	--	--	--	--	--	--	--	--	--	--	--	--	--	--	--	--	--	--	--	--	--	--	--	--	--	--	--	--	--	--	--	--	--	--	--	--	--	--	--	--	--	--	--	--	--	--	--	--	--	--	--	--	--	--	--	--	--	--	--	--	--	--	--	--	--	--	--	--	--	--	--	--	--	--	--	--	--	--	--	--	--	--	--	--	--	--	--	--	--	--	--	--	--	--	--	--	--	--	--	--	--	--	--	--	--	--	--	--	--	--	--	--	--	--	--	--	--	--	--	--	--	--	--	--	--	--	--	--	--	--	--	--	--	--	--	--	--	--	--	--	--	--	--	--	--	--	--	--	--	--	--	--	--	--	--	--	--	--	--	--	--	--	--	--	--	--	--	--	--	--	--	--	--	--	--	--	--	--	--	--	--	--	--	--	--	--	--	--	--	--	--	--	--	--	--	--	--	--	--	--	--	--	--	--	--	--	--	--	--	--	--	--	--	--	--	--	--	--	--	--	--	--	--	--	--	--	--	--	--	--	--	--	--	--	--	--	--	--	--	--	--	--	--	--	--	--	--	--	--	--	--	--	--	--	--	--	--	--	--	--	--	--	--	--	--	--	--	--	--	--	--	--	--	--	--	--	--	--	--	--	--	--	--	--	--	--	--	--	--	--	--	--	--	--	--	--	--	--	--	--	--	--	--	--	--	--	--	--	--	--	--	--	--	--	--	--	--	--	--	--	--	--	--	--	--	--	--	--	--	--	--	--	--	--	--	--	--	--	--	--	--	--	--	--	--	--	--	--	--	--	--	--	--	--	--	--	--	--	--	--	--	--	--	--	--	--	--	--	--	--	--	--	--	--	--	--	--	--	--	--	--	--	--	--	--	--	--	--	--	--	--	--	--	--	--	--	--	--	--	--	--	--	--	--	--	--	--	--	--	--	--	--	--	--	--	--	--	--	--	--	--	--	--	--	--	--	--	--	--	--	--	--	--	--	--	--	--	--	--	--	--	--	--	--	--	--	--	--	--	--	--	--	--	--	--	--	--	--	--	--	--	--	--	--	--	--	--	--	--	--	--	--	--	--	--	--	--	--	--	--	--	--	--	--	--	--	--	--	--	--	--	--	--	--	--	--	--	--	--	--	--	--	--	--	--	--	--	--	--	--	--	--	--	--	--	--	--	--	--	--	--	--	--	--	--	--	--	--	--	--	--	--	--	--	--	--	--	--	--	--	--	--	--	--	--	--	--	--	--	--	--	--	--	--	--	--	--	--	--	--	--	--	--	--	--	--	--	--	--	--	--	--	--	--	--	--	--	--	--	--	--	--	--	--	--	--	--	--	--	--	--	--	--	--	--	--	--	--	--	--	--	--	--	--	--	--	--	--	--	--	--	--	--	--	--	--	--	--	--	--	--	--	--	--	--	--	--	--	--	--	--	--	--	--	--	--	--	--	--	--	--	--	--	--	--	--	--	--	--	--	--	--	--	--	--	--	--	--	--	--	--	--	--	--	--	--	--	--	--	--	--	--	--	--	--	--	--	--	--	--	--	--	--	--	--	--	--	--	--	--	--	--	--	--	--	--	--	--	--	--	--	--	--	--	--	--	--	--	--	--	--	--	--	--	--	--	--	--	--	--	--	--	--	--	--	--	--	--	--	--	--	--	--	--	--	--	--	--	--	--	--	--	--	--	--	--	--	--	--	--	--	--	--	--	--	--	--	--	--	--	--	--	--	--	--	--	--	--	--	--	--	--	--	--	--	--	--	--	--	--	--	--	--	--	--	--	--	--	--	--	--	--	--	--	--	--	--	--	--	--	--	--	--	--	--	--	--	--	--	--	--	--	--	--	--	--	--	--	--	--	--	--	--	--	--	--	--	--	--	--	--	--	--	--	--	--	--	--	--	--	--	--	--	--	--	--	--	--	--	--	--	--	--	--	--	--	--	--	--	--	--	--	--	--	--	--	--	--	--	--	--	--	--	--	--	--	--	--	--	--	--	--	--	--	--	--	--	--	--	--	--	--	--	--	--	--	--	--	--	--	--	--	--	--	--	--	--	--	--	--	--	--	--	--	--	--	--	--	--	--	--	--	--	--	--	--	--	--	--	--	--	--	--	--	--	--	--	--	--	--	--	--	--	--	--	--	--	--	--	--	--	--	--	--	--	--	--	--	--	--	--	--	--	--	--



A technical line drawing of a toilet stall. The stall is rectangular with a toilet fixture inside. Dimension lines with arrows indicate the minimum required height and width. The height dimension is labeled "56" (MIN.)" and the width dimension is labeled "60" (MIN.)".

Technical drawing of a toilet with dimensions for the bidet attachment. The drawing shows the side profile of the toilet and the bidet attachment. Key dimensions include:

- Overall width: 39" - 41"
- Distance from toilet centerline to the first bidet nozzle: 12" (MAX)
- Distance between the two bidet nozzles: 54" (MIN.)
- Distance from the toilet bowl to the bidet attachment: 17" - 19"
- Distance from the toilet bowl to the bidet attachment (alternative measurement): 33" - 36"
- Distance from the toilet bowl to the bidet attachment (alternative measurement): 39" - 41"
- Distance from the toilet bowl to the bidet attachment (alternative measurement): 18" (MIN.)
- Distance from the toilet bowl to the bidet attachment (alternative measurement): 18" (MIN.)

A diagram showing a rectangular area labeled "CLEAR FLOOR SPACE". The space is defined by a larger rectangle with a smaller rectangle inside it. The inner rectangle has a small circle in the center, representing a wheelchair. Dimension lines indicate the following requirements:

- A vertical dimension of 17" - 25" for the height of the clear space.
- A horizontal dimension of 30" (MIN.) for the width of the clear space.
- A vertical dimension of 48" (MIN.) for the total height of the area.

PROJECT :
PROPOSED PINELLAS COMPUTERS AT
1004 S MARTIN LUTHER KING JR AVE.
CLEARWATER,
FL 33756

TITLE:
ADA DETAILS

DRG NO: A 100

SCALE: 3/8" = 1'-0" @ A1

DESIGNED BY: MD AL AMIN

REF.NO:

DRAWN BY: _____

REVISION NO: 00

CHECKED BY _____

PAGE: 11

DATE: 02/08/2024

APPROVED BY:

Watermark