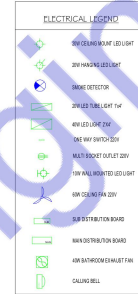
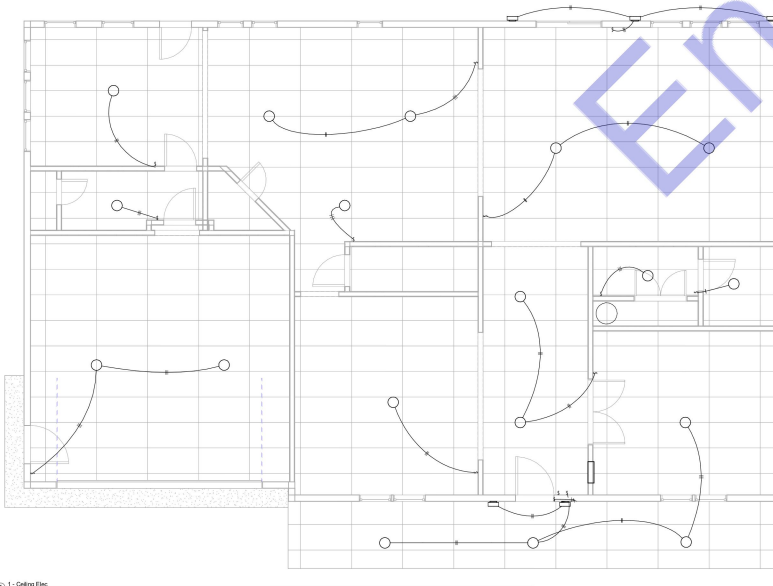


This electrical plan for 10412 Laurel Ridge Way, Fredericksburg, VA, has been developed in strict adherence to all applicable and updated codes and regulations. The following standards have been meticulously followed:

- ① 1 - Ceiling Elec.
300' = 1' 0"

By adhering to these updated codes and regulations, this electrical plan ensures the safety, reliability, and compliance of all electrical installations for the specified property.



Electrical Legends
114" = 1'-0"



Consultant
Address
Email
Phone
Website

Engr Al Arin
OFFICE 24A 182-184
HIGH STREET NORTH
AREA 1/1, EAST HAM
LONDON
UNITED KINGDOM E6 2JA
support1@engrteam.com
www.engrteam.com

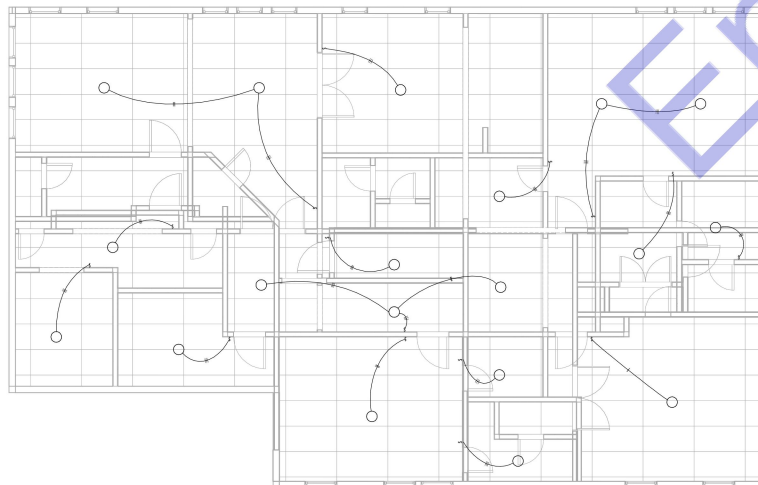
[illegible]

First Floor Electrical Lighting Plan

Project Number	Project Number
Date	Issue Date
Drawn By	Author
Checked By	Checker

E. 1

Scale	As indicated
-------	--------------



Consultant Address	Engr AJ Arin OFFICE 24A, 182-184 HIGH STREET NORTH AREA 1/1, EAST HAM LONDON UNITED KINGDOM E6 2JA
Email	support@engrteam.com
Phone	
Website	www.engrteam.com

[illegible]

Owner

10412 Laurel Ridge Way
Fredericksburg, VA 22408

Second Floor Electrical Lighting Plan

Project Number	Project Number
Date	Issue Date
Drawn By	Author
Checked By	Checker

E. 2

Scale $3/8" = 1'-0"$

6/20/25 8:07:53 PM



Designed By Engr. Al Amin (MEP Engineer | Director - Engineer's Team LTD)

 support@engrteam.com

 <https://engrteam.com>

OUR SERVICES:

- MEP Plan Services
- HVAC Layout Plan
- Electrical Engineering Services
- Plumbing Engineering Services
- Fire protection & Security systems
- Specialized services

INFORMATION:

- Studio
- Contact Us
- Gift cards
- Privacy Policy
- Refund Policy
- Delivery Policy